



ADVANCED OPHTHALMOLOGY OF MICHIANA

Steve Gerber, M.D. · Bruce Schwartz, M.D. · Eric Yoon, M.D. · Orlando Avena, O.D.

Dear Patient:

It is our pleasure to welcome you to our office. Our desire is to provide you with excellent care and timely service. To help your appointment go more smoothly, please fill out all new patient forms and bring them the day of your appointment. You can access our new patient forms on our website www.aomichiana.com

In addition to the enclosed paperwork, please bring:

- Your current glasses and sunglasses, if you own a pair
- Photo identification (driver's license)
- Your health insurance card(s)
- Insurance referral, if required by your insurance
- Any CT, MRI or medical reports pertaining to the condition you are being seen **for**
- A list of Medications that you take, including eye drops

Insurance and Payments:

As a reminder, many insurance companies do not cover Routine Eye Exams. If you have vision insurance such as **VSP or EyeMed** that covers a Routine Eye Exam, please let us know in advance. **If your insurance has co-pays for exams, you will be required to pay this at the time of your appointment.** You are responsible for any charges not covered by your insurance and/or charges deemed the “patient’s responsibility” by your insurance company. This includes if you have not yet met your deductible. You will be billed for these amounts.

***If you do not have insurance or your insurance is not in network with our office, please bring \$150 to your appointment. This is an estimated amount, the final total will not be known until after your exam is completed.*

Appointment:

Please arrive 10-15 minutes before the scheduled time of your first appointment. **We ask that you notify us at least 24 hours in advance if you are unable to keep your appointment. If you arrive more than 10 minutes late, we reserve the right to re-schedule your appointment.** Prior to your appointment our automated system will call, email and/or text you with an appointment reminder.

If your appointment is for a comprehensive eye exam, plan on being at our office for 1 1/2 hours and anticipate having the pupils of your eyes dilated. Your vision will be blurred for an average of 3-4 hours. Some patients feel more comfortable having someone with them to drive them home. If that is something you are interested in, you will be responsible for setting that up.

Patients under the age of 18:

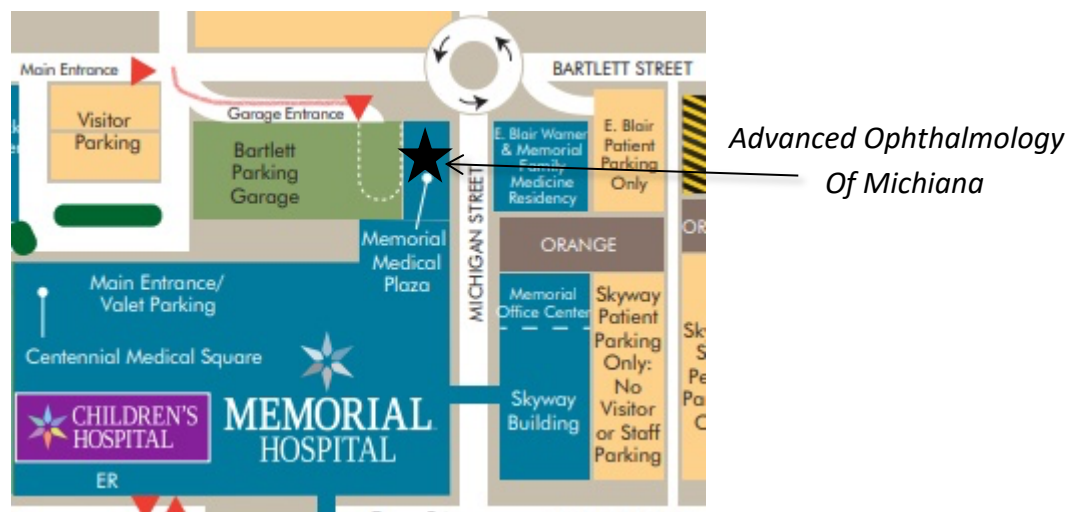
A parent or guardian must accompany the patient unless written authorization is received by our office. You may send a note along with your child or fax it to us at 574.288.8921. Your child's eyes will be dilated.

Optical Shop:

At Advanced Ophthalmology, we feel that our optical department is the best place to purchase your eyewear. We can control exactly how your glasses are made, assuring you of the accuracy of your prescription. Our knowledgeable opticians are always ready to help you select the frames and lenses that will best suit your needs.

Parking and Location Info:

Our office is located inside the Memorial Medical Plaza inside of the Bartlett Parking Garage. For your convenience we cover the cost of your parking. Please bring your parking ticket into the office and our front desk staff will be happy to validate it for you.



For more information regarding our practice, please visit our website www.aomichiana.com

We look forward to meeting you and hope your experience at our office is a pleasant one.

Sincerely,

Steve Gerber, M.D.
Bruce Schwartz, M.D.
Eric Yoon, M.D.
Orlando Avena, O.D.

707 North Michigan Street, Suite 210
South Bend, Indiana 46601
www.aomichiana.com

Phone: 574.233.2114
Fax: 574.288.8921
Email: eyedoctors@aomichiana.com